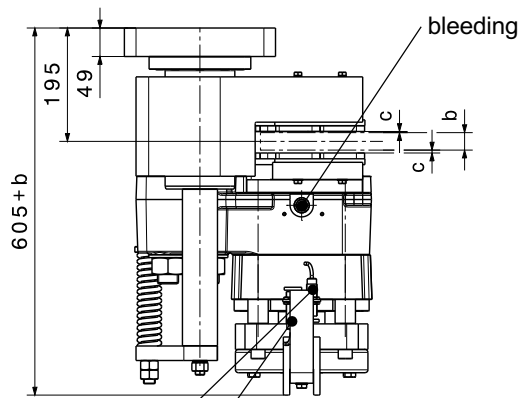
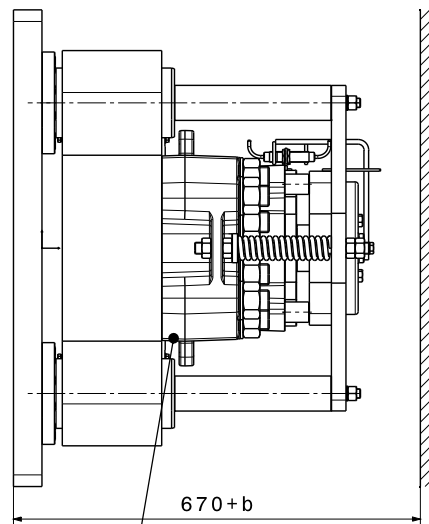
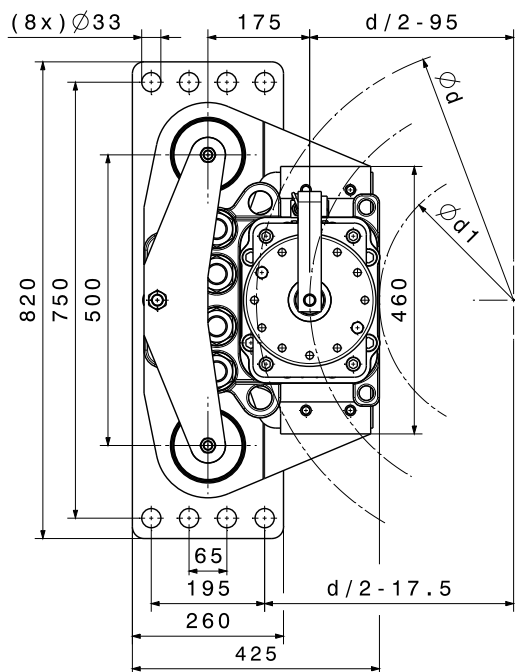


CALIPER BRAKE

SHI 230 FC with flange



M 1501 394 E-EN-2016-12



optional: proximity switch "lining wear"

optional: proximity switch "brake open / close"

hydraulic connection G 1/2"

manual release device is optionally available

Mounting Studs			
n	quantity	8	
	size, grade	M30, 10.9	
M _A	fastening torque	Nm	2000 at μ=0,14
Linings			
	material	sinter	
	friction coefficient*	0,4	

SHI-Type		231 FC	232 FC	
Clamping Force F _A				
F _A	with airgap c = 1,0 mm	kN	240	300
F _A	with airgap c = 1,5 mm	kN	225	270
Torque Calculation				
M _{Br}	braking torque	Nm	2 x F _A x μ x (d/2-95)	
Hydraulic				
PL	release pressure	bar	130	170
P _{max}	max. pressure	bar	175	205
V _{max}	volume at c = 1,5 mm	ltr	0,076	
Brake Discs				
b	disc thickness	mm	20 ≤ b ≤ 40	
d	disc-Ø	mm	900 ≤ d ≤ 2400	
d ₁	max. hub or drum-Ø	mm	d - 440	
Dimensions				
L x W x H = 425 x (605+b) x 820 mm				
max. weight: 558 kgs				

*average friction coefficient with standard material combination and a circumferential speed up to 15 m/s

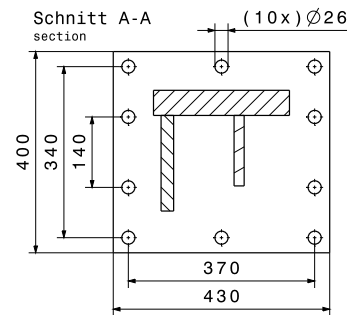
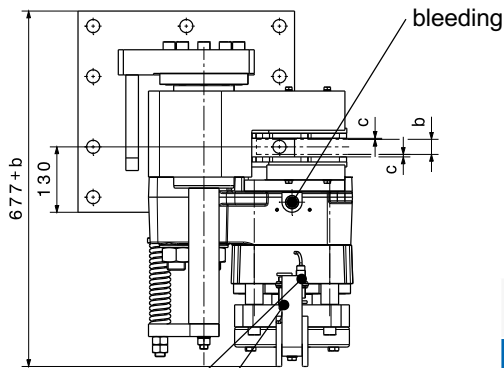
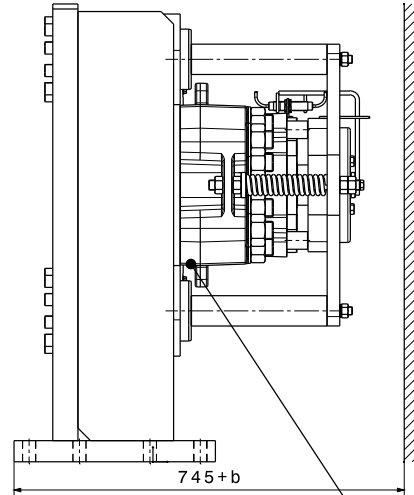
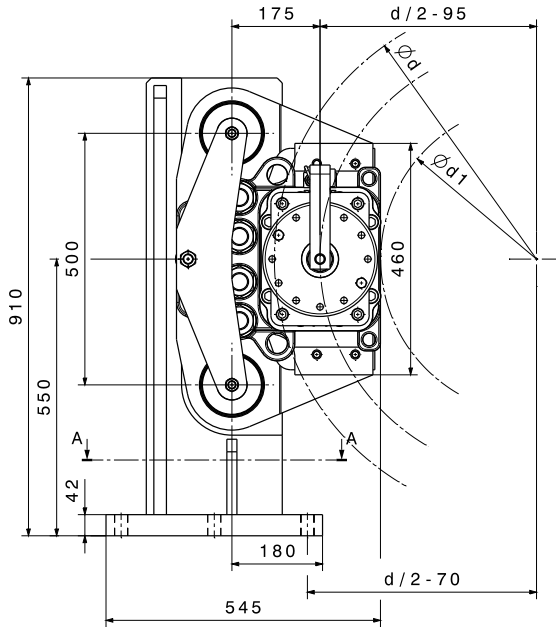
When ordering please advise: right hand version, as shown; left hand version, mirror inverted!



CALIPER BRAKE

SHI 230 FC with console

M 1501 395 E-EN-2016-12



hydraulic connection G 1/2"

manual release device is optionally available

optional: proximity switch "lining wear"

optional: proximity switch "brake open / close"

Mounting Studs			
n	quantity	10	
	size, grade	M24, 8.8	
M _A	fastening torque	Nm	710 at $\mu=0,14$
Linings			
	material	sinter	
	friction coefficient*	0,4	

SHI-Type	231 FC	232 FC		
Clamping Force F _A				
F _A	with airgap c = 1,0 mm	kN	240	300
F _A	with airgap c = 1,5 mm	kN	225	270
Torque Calculation				
M _{Br}	braking torque	Nm	2 x F _A x μ x (d/2-95)	
Hydraulic				
PL	release pressure	bar	130	170
P _{max}	max. pressure	bar	175	205
V _{max}	volume at c = 1,5 mm	ltr	0,076	
Brake Discs				
b	disc thickness	mm	20 ≤ b ≤ 40	
d	disc-Ø	mm	900 ≤ d ≤ 2400	
d ₁	max. hub or drum-Ø	mm	d - 440	
Dimensions				
L x W x H = 545 x (677+b) x 910 mm				
max. weight: 660 kgs				

*average friction coefficient with standard material combination and a circumferential speed up to 15 m/s

When ordering please advise: right hand version, as shown; left hand version, mirror inverted!